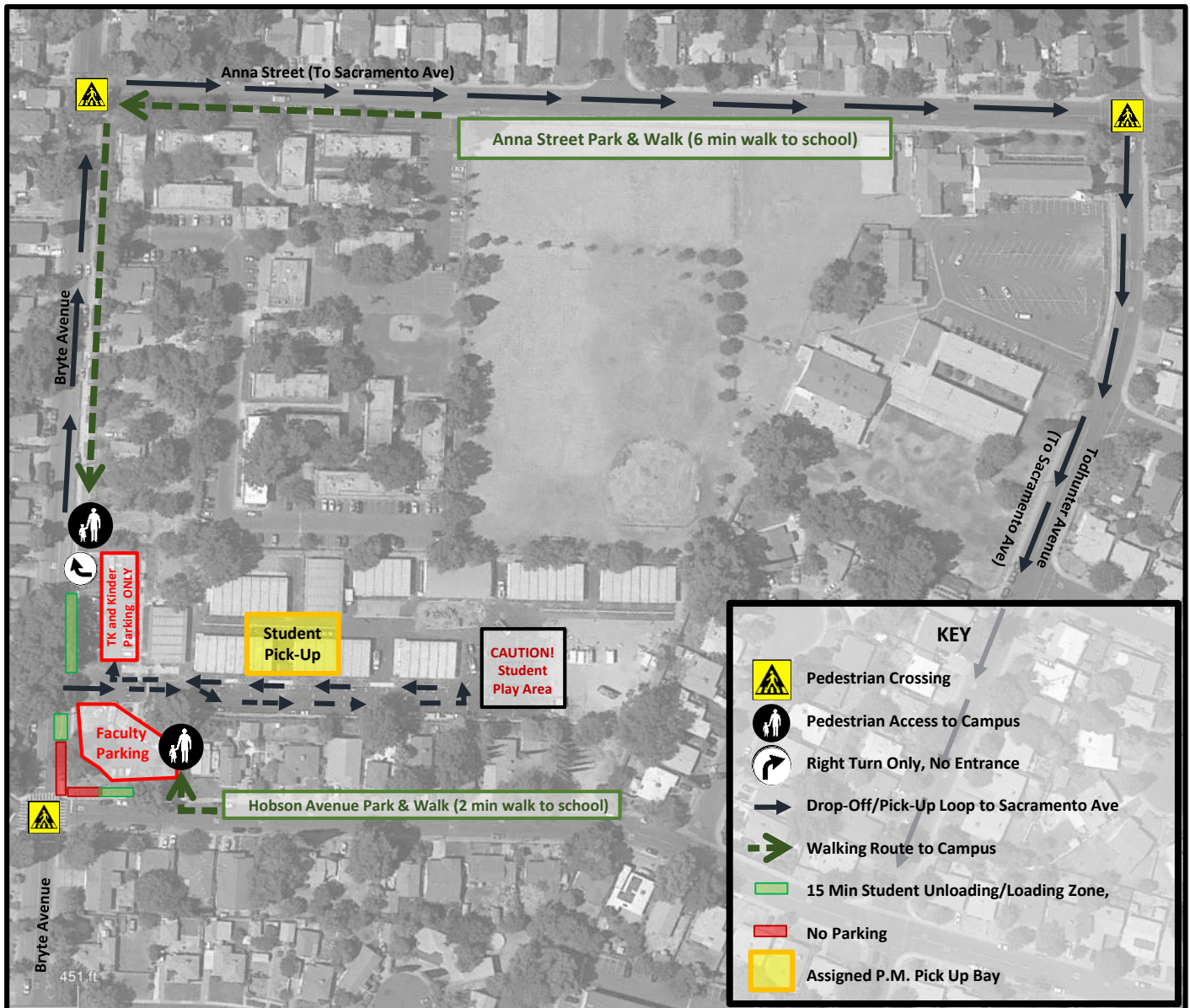




Drop-Off and Pick-Up Procedures

For the safety of your child and all of our families, please follow these procedures during morning drop-off and afternoon pick-up:



BE A COURTEOUS DRIVER

- Be alert for students walking and biking to school. They are more likely to dart out into the street.
- Always drive 25 MPH or less around the school during school travel times.
- DO NOT stop in or block crosswalks and sidewalks.
- Respect crossing guard directions, they ensure the safety of all road users.
- DO NOT park or block residential driveways.
- DO NOT use your cell phone while driving.
- Honk horn ONLY if you see an unsafe situation that needs immediate attention.

SAFE LOADING AND UNLOADING

- DO NOT ask students to cross idling traffic, only load and unload students at the curb or in the designated loading zone.
- Students should enter and exit only on the RIGHT side of your vehicle.

PARKING LOT PICK-UP AND DROP-OFF

- The traffic loop gates open at 7:45 in the morning and 3:00 in the afternoon. If you arrive before the gates open, DO NOT queue. Park and walk in.
- The traffic loop is one way. Pull all the way forward and wait for staff instructions.
- Be alert! Watch for merging traffic when exiting the loading area.
- When exiting the parking lot, DO NOT turn left. Exit traffic must turn RIGHT ONLY. To return to Sacramento Avenue, drive down Anna Street and Todhunter Avenue.
- DO NOT make U-turns on Bryte Avenue.

PARK & WALK

- Park on side streets and walk your students to or from school to avoid traffic in the parking lot.
- Park along Hobson Avenue (2 minute walk) or along the field on Anna Street (6 minute walk). This is a great way to teach your student about pedestrian safety!
- Encourage other families to park and walk with you.

